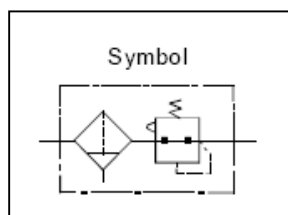


AW Series Filter, Regulator Combination



Specification:

Code	AW1000	AW2000	AW3000	AW4000	AW5000
Port size	M5X0.8	1/8", 1/4"	1/4", 3/8	3/8", 1/2", 3/4"	3/4", 1"
Fluid	Air				
Filtration	5um				
Proof pressure	1.5Mpa (15bar)				
Max working pressure	1.0Mpa (10bar)				
Set pressure range	0.05 ~ 0.7Mpa	0.05 ~ 0.85Mpa			
Temperature	-5~60°C (23~140°F) No freezing				
Construction	Relieving style				
Bowl material	Polycarbonate				
Flow capacity (L/min)*	90	500	2000	4500	5000
Weight (kg)	0.09	0.36	0.53	1.09	1.70

*Note: Supply pressure: 0.7Mpa, Set pressure: 0.5Mpa

Ordering Code:

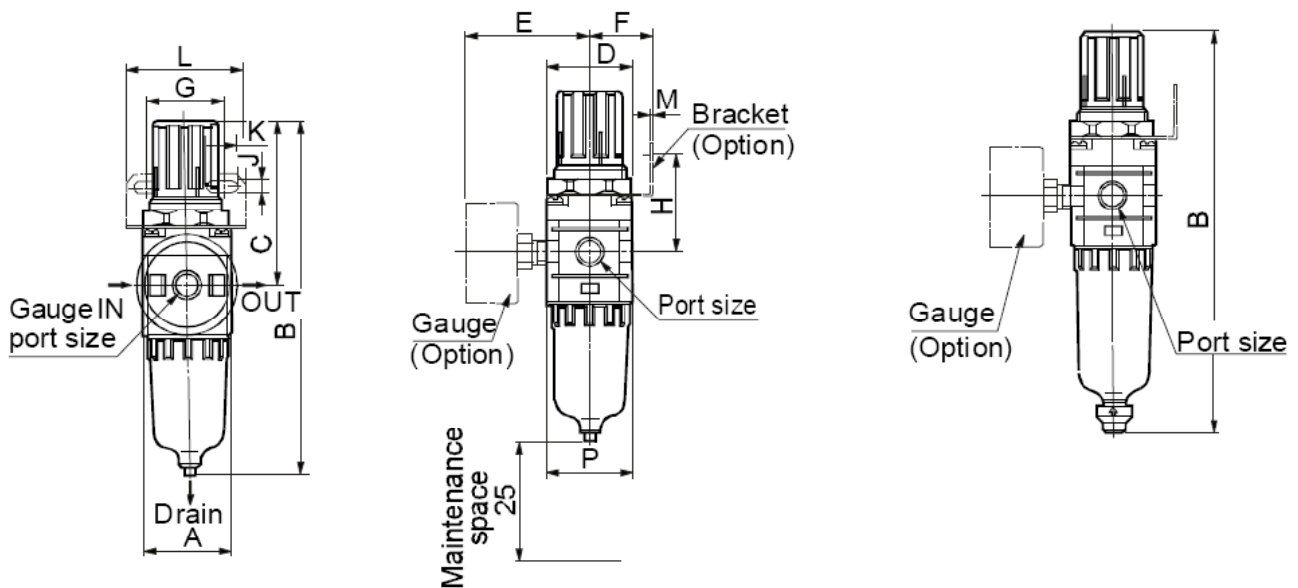
AW 3000 -03 -D

① ② ③ ④

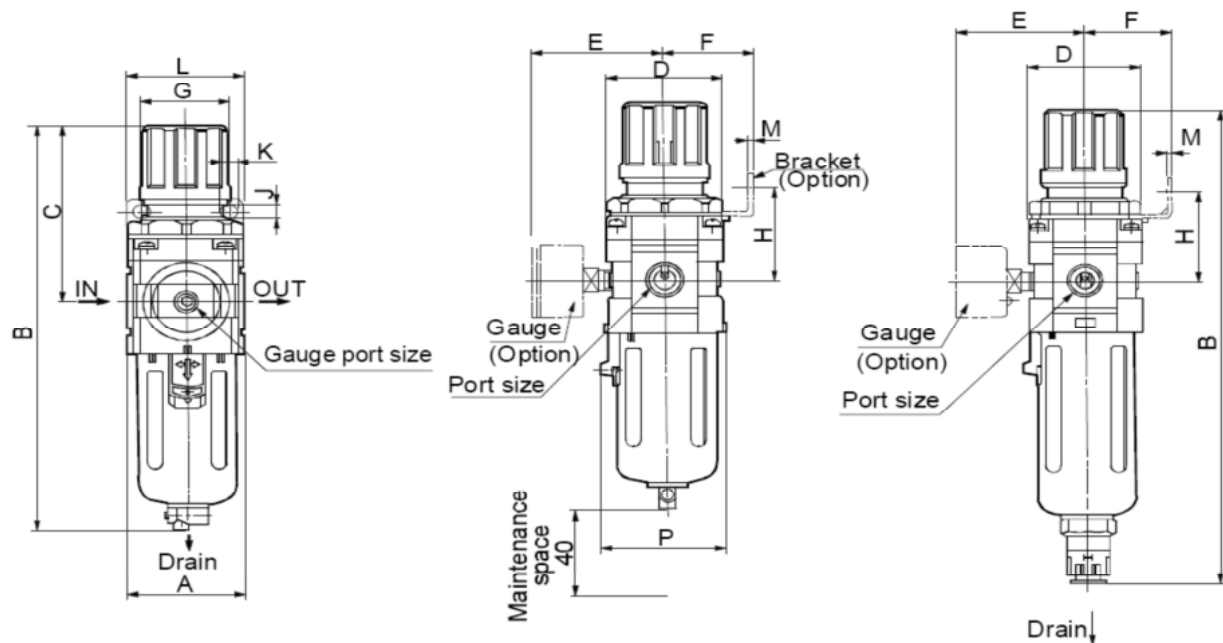
①Model		②Series	③Port size		④Other Option	
AC	Filter, Regulator, Lubricator Combination	1000	M5	M5X0.8	Blank	Manual drain
		2000	01	1/8"	D	Auto drain
AW	Filter, Regulator Combination	3000	02	1/4"	L	With level gauge
AF	Filter	4000	03	3/8"		
AR	Regulator	5000	04	1/2"		
AL	Lubricator		06	3/4"		
			10	1"		

Dimension

AW1000, AW2000



AW3000, AW4000, AW5000



Model	Port size	A	B	C	D	E	Bracket mounting dimensions							N	P	With auto drain	
							F	G	H	J	K	L	M			Float	Press.Diff.
																B	B
AW1000	M5×0.8	25	109.5	50.5	25	26	25	28	30	4.5	6.5	40	2.0	20.5	28	—	130
AW2000	1/4	40	164.5	78	40	56.8	30	34	44	5.4	15.4	55	2.3	33.5	40	—	187.5
AW3000	1/4, 3/8	53	207.5	92.5	53	60.8	41	40	46	6.5	8.0	53	2.3	42.5	56	248.5	—
AW4000	3/8, 1/2	70	259	112	70	70.5	50	54	54	8.5	10.5	70	2.3	52.5	73	300	—
AW4000-06	3/4	75	263	114	70	70.5	50	54	56	8.5	10.5	70	2.3	52.5	73	304	—
AW5000	3/4, 1	90	338	116	90	75.5	49.2	54	62	8.5	10.5	70	2.3	52.5	90	378	—