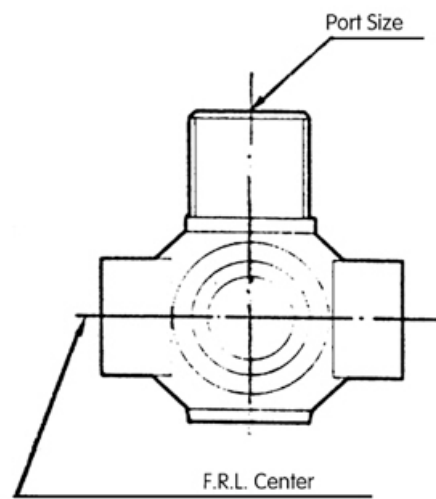
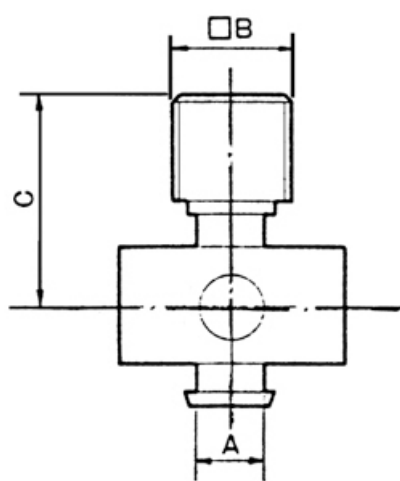
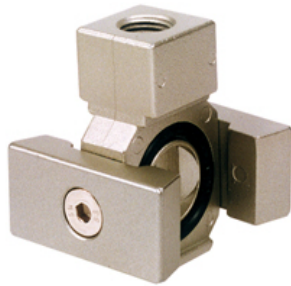
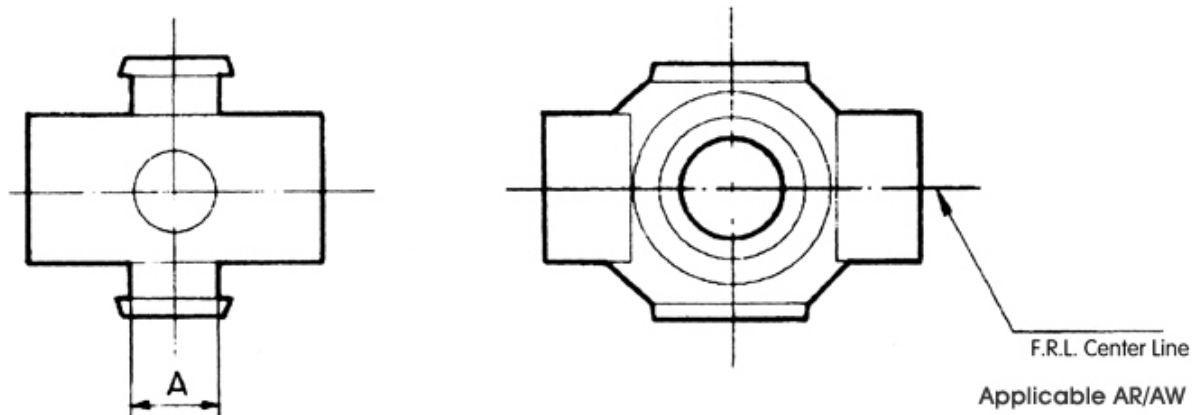


T Spacer



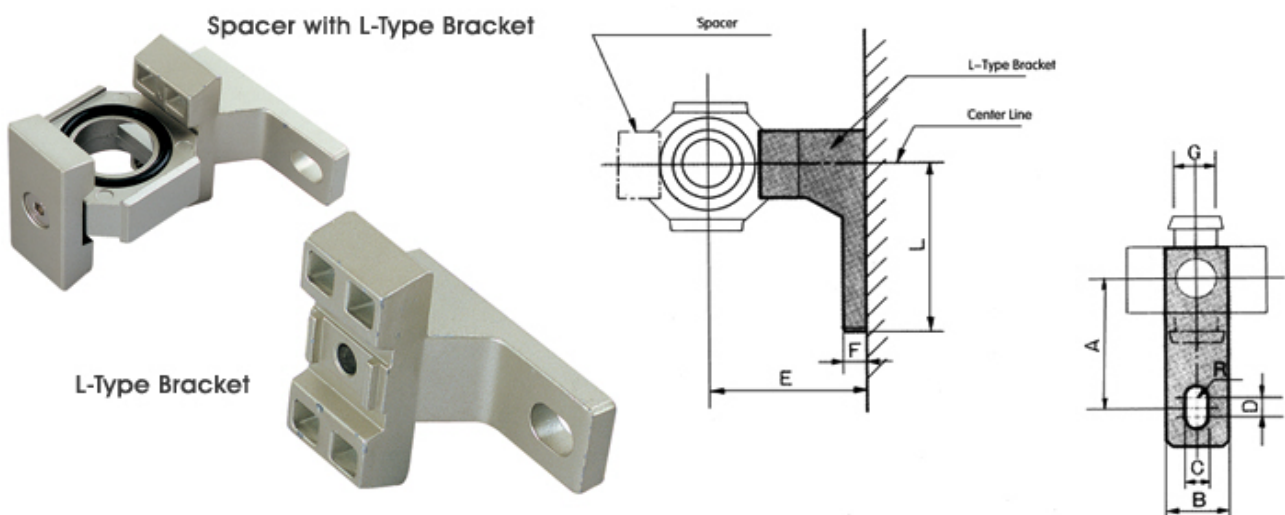
Code	Port Size G	A	B	C	Applicable
Y21-01	G1/8	10	19	29	AC2000
Y21-02	G1/4				
Y31-01	G1/8	11	19	33	AC3000
Y31-02	G1/4				
Y41-02	G1/4	14	24	39	AC4000
Y41-03	G3/8				
Y61-03	G3/8	15	30	50.5	AC5000
Y61-04	G1/2				

Y Spacer



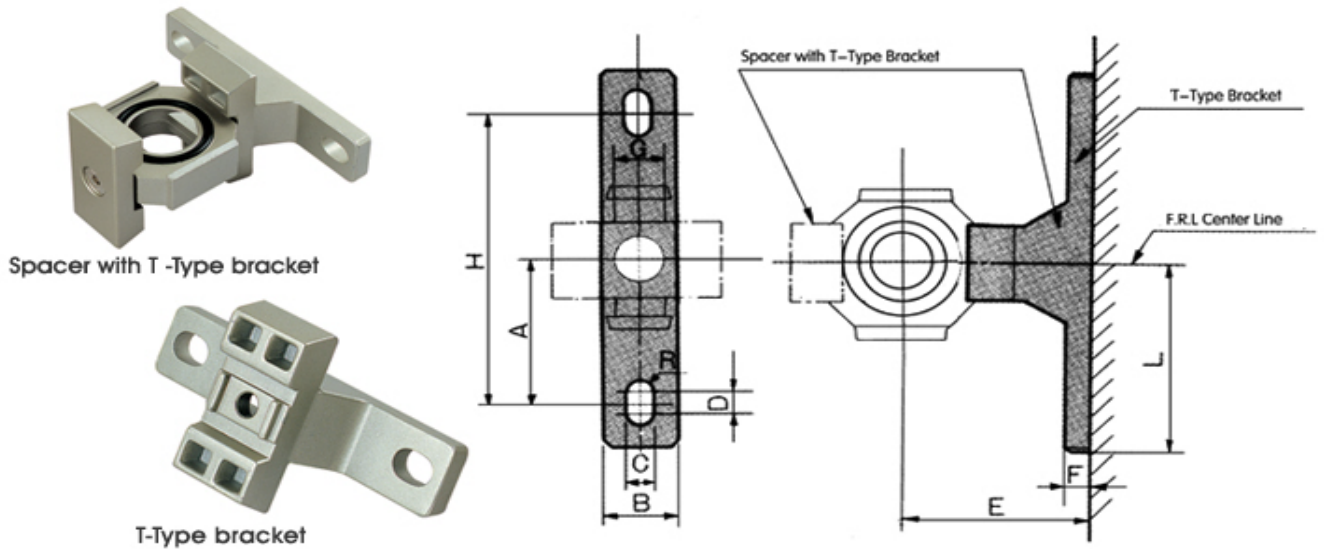
Code	A	Application	Code	A	Application
Y10	8	AC1000	Y40	14	AC4000
Y20	10	AC2000	Y50	14	AC4000-06
Y30	11	AC2500-3000	Y60	15	AC5000

L Bracket



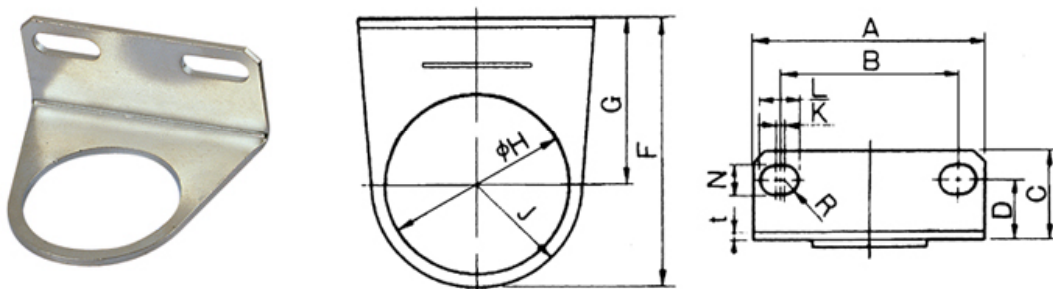
Ordering Code		A	B	C	D	E	F	G	R	L	Applications
L Bracket Only	With Spacer										
B110L	Y10L	20	12	4.5	3	25	5	8	2.25	27	AC1000
B210L	Y20L	24	15	5.5	3	30	5	10	2.75	33	AC2000
B310L	Y30L	35	16	7	4	41	7	11	3.5	45	AC2500,3000
B410L	Y40L	40	22	9	4	50	7	14	4.5	50	AC4000
B510L	Y50L	40	22	9	4	50	7	14	4.5	50	AC4000-06
B610L	Y60L	50	23	12	4	70	11	15	6	63	AC5000

T Bracket



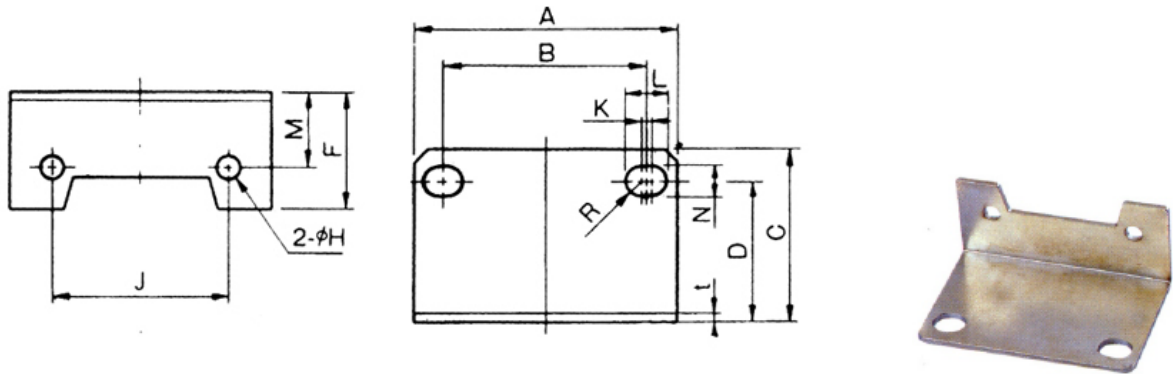
Ordering Code		A	B	C	D	E	F	G	H	R	L	Applications
T Bracket Only	Wih Spacer											
B110T	Y10T	20	12	4.5	3	25	5	8	40	2.25	27	AC1010
B210T	Y20T	24	15	5.5	3	30	5	10	48	2.75	33	AC2010
B310T	Y30T	35	16	7	4	41	7	11	70	3.5	45	AC3010
B410T	Y40T	40	22	9	4	50	7	14	80	4.5	50	AC4010
B510T	Y50T	40	22	9	4	50	7	14	80	4.5	50	AC4010-06
B610T	Y60T	50	23	12	4	69.8	10.5	15	100	6	63	AC5010

B20 Bracket



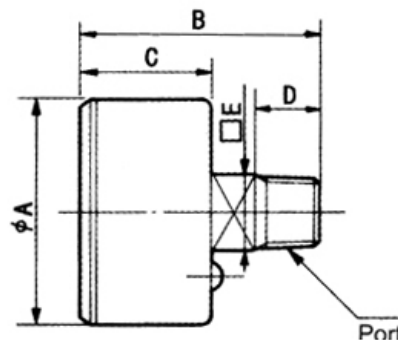
Code	A	B	C	D	F	G	H	J	K	L	N	R	t	Application
B120	40	28	17	11	38	25	21	12	2	6.5	4.5	2.3	2	AR/AW1000
B220	55	34	25	19	50	30	34	20	10	15	5.4	2.7	2.3	AR/AW2000 、 AR2500
B320	53	40	22	14	64	39	43	25	1.5	8	6.5	3.3	2.3	AR/AW3000
B420	70	54	27	18	79	49	53	30	2	11	8.5	4.3	2.3	AR4000-5000 AW4000-5000

B40 Bracket



Code	A	B	C	D	F	H	J	K	L	M	N	R	t	Application
B240	40	27	33	27	18	4.5	26	3	8.4	14	5.4	2.7	2.3	AF/AL2000
B340	53	40	39	32	23	4.5	35	1.5	8	19	6.5	3.25	2.3	AF/AL3000
B440	70	54	47	38	32	5.5	47	2	11	20	8.5	4.27	2.3	AF/AL4000
B540	70	54	47	38	28	5.5	47	2	11	20	8.5	4.25	2.3	AF/AL4000-06
B640	90	66	64	52	43	6.5	60	2	13	29	11	5.5	3.2	AF/AL5000

Pressure Gauge



Code	Gauge Range	Port	A	B	C	D	E	Applicable
G27-10-R1	0-1Mpa 0-150Psi	1/16	26	17.5	11	6.5	21	AR1000 AW1000
G36-10-01		1/8	42	38.5	24	10	11	AR2000-3000 AW2000-3000
G46-10-02		1/4	52.5	43.5	25	10	14	AR4000-5000 AW4000-5000