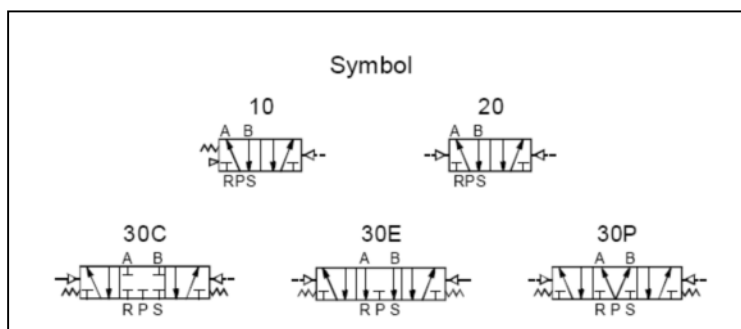


## 4A100 Series Air Control Valve



### Specification:

Code	4A110-M5	4A120-0M5	4A130-M5	4A110-06	4A120-06	4A130-06
Orifice size (Cv)	5.5mm <sup>2</sup> (0.31)		5mm <sup>2</sup> (0.28)	12mm <sup>2</sup> (0.67)		9mm <sup>2</sup> (0.5)
Port size	Inlet=Outlet=Exhaust=M5			Inlet=Outlet=Exhaust=1/8"		
Fluid	Air (be filtered by 40 um colander)					
Pressure range	1.5~8.0 bar (0.15~0.8 Mpa)					
Proof pressure	12 bar (1.2 Mpa)					
Temperature	-5~60°C (23~140°F) No freezing					
Lubrication	Not required					
Max frequency	5Hz		3Hz	5Hz		3Hz

### Ordering Code:

**4A1 10 -06**

① ② ③

#### ①Model

4A1	5 port 2(3) position Solenoid valve 100 Series
-----	--

#### ②Valve Type

10	Single air control 5/2 way
20	Double air control 5/2 way
30C	Double air control 5/3 way Closed center
30E	Double air control 5/3 way Exhaust center
30P	Double air control 5/3 way Pressure center

#### ③Port

M5	M5
06	1/8"

# Dimension

