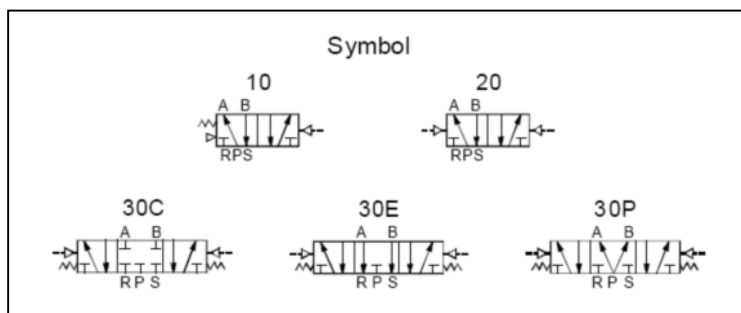


4A200 Series Air Control Valve



Specification:

Code	4A210-06	4A220-06	4A230-06	4A210-08	4A220-08	4A230-08
Orifice size (Cv)	14mm² (0.78)		12mm²(0.67)	16mm² (0.89)		12mm²(0.67)
Port size	Inlet=Outlet=Exhaust=1/8"			Inlet=Outlet=1/4", Exhaust=1/8"		
Fluid	Air (be filtered by 40um colander)					
Pressure range	1.5~8.0 bar (0.15~0.8 Mpa)					
Proof pressure	12 bar (1.2 Mpa)					
Temperature	-5~60°C (23~140°F) No freezing					
Lubrication	Not required					
Max frequency	5Hz		3Hz	5Hz		3Hz

Ordering Code:

4A2 10 -08

① ② ③

①Model

4A2	5 port 2(3) position
	Air valve
	200 Series

②Valve Type

10	Single air control 5/2 way
20	Double air control 5/2 way
30C	Double air control 5/3 way Closed center
30E	Double air control 5/3 way Exhaust center
30P	Double air control 5/3 way Pressure center

③Port

06	1/8"
08	1/4"

Dimension

