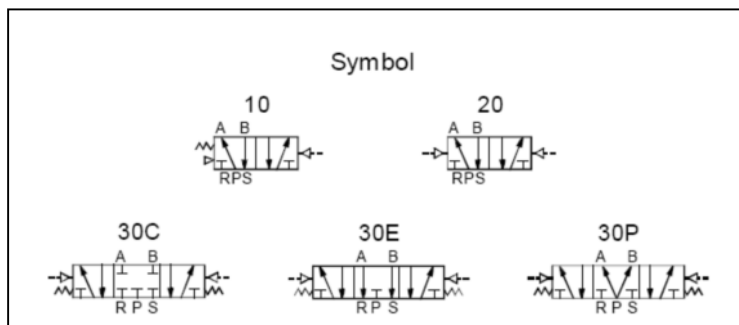


4A300 Series Air Control Valve



Specification:

Code	4A310-08	4A320-08	4A330-08	4A310-10	4A320-10	4A330-10
Orifice size (Cv)	25mm ² (1.4)		18mm ² (1.0)	30mm ² (1.68)		18mm ² (1.0)
Port size	Inlet=Outlet=Exhaust=1/4"			Inlet=Outlet=3/8", Exhaust=1/4"		
Fluid	Air (be filtered by 40um colander)					
Pressure range	1.5~8.0 bar (0.15~0.8 Mpa)					
Proof pressure	12 bar (1.2 Mpa)					
Temperature	-5~60°C (23~140°F) No freezing					
Lubrication	Not required					
Max frequency	4Hz		3Hz	4Hz		3Hz

Ordering Code:

4A3 10 -10

① ② ③

①Model

4A3	5 port 2(3) position
	Air control valve
	300 Series

②Valve Type

10	Single air control 5/2 way
20	Double air control 5/2 way
30C	Double air control 5/3 way Closed center
30E	Double air control 5/3 way Exhaust center
30P	Double air control 5/3 way Pressure center

③Port

08	1/4"
10	3/8"

Dimension

