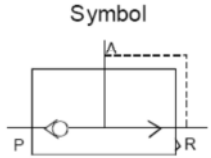


# Quick Exhaust Valve **Series QE**



## ◆ How to Order

**QE**

**01**

Port size

<b>01</b>	PT1/8	<b>02</b>	PT1/4	<b>03</b>	PT3/8
<b>04</b>	PT1/2	<b>06</b>	PT3/4		

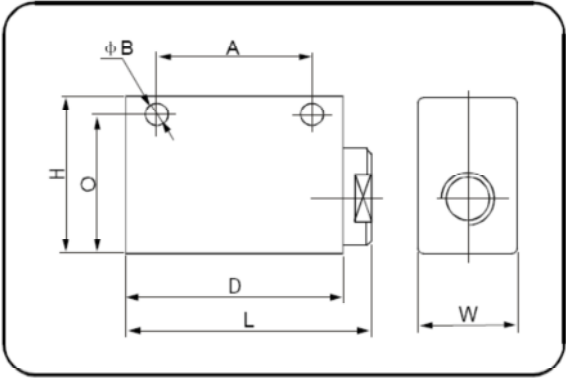
Model

<b>QE</b>	Quick Exhaust Valve
-----------	---------------------

## ◆ Specifications

Model	QE-01	QE-02	QA-03	QA-04	QA-06
Fluid	Air				
Port size	PT1/8	PT1/4	PT3/8	PT1/2	PT3/4
Operating pressure range	0~1.0 MPa				
Ambient and fluid temperature	0~60℃				

## ◆ Dimensions



Type	Bore	L	W	H	A	B	C	D
<b>QE-01</b>	PT1/8	46	20	32	30	4.3	27	40
<b>QE-02</b>	PT1/4	62	25	40	39	5.6	33.5	55
<b>QE-03</b>	PT3/8	62	25	40	39	5.6	33.5	55
<b>QE-04</b>	PT1/2	98	38	64	60	8.5	51	90
<b>QE-06</b>	PT3/4	98	38	64	60	8.5	51	90